

# Persian Alphabet Flashcards

*Easy to Print and Cut*

ن	م	خ	ح	چ	ج	ث	ت	پ	ب	آ
Noon /n/	Mim /m/	Khe /kh/	He /h/	Che /ch/	Jim /j/	Se /s/	Te /t/	Pe /p/	Be /b/	Alef/â/
ه	و	ض	ص	ش	س	ژ	ز	ر	ذ	د
He /h/	Vâv /v/	Zât /z/	Sât /s/	Shin /sh/	Sin /s/	Zhe /zh/	Ze /z/	Re /r/	Zâl /z/	Dâl /d/
ی	ل	گ	ک	ق	ف	غ	ع	ظ	ط	
Ye /y/	Lâm /L/	Gâf /g/	Kâf /k/	Ghâf/gh/	Fe /f/	Ghayn /gh/	Ayn/ ' /	Zâ/z/	Tâ/t/	

1

ث ت پ ب آ

Se /s/  
as in sun

Te /p/  
as in toy

Pe /p/  
as in parrot

Be /b/  
as in boy

Alef /â/  
as in arm

2

پا

/pâ/  
foot

تاب

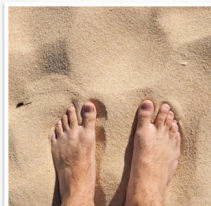
/tâb/  
swing

آب

/âb/  
water

آ

/Alef /â/  
as in arm



Final  
Form

Medial  
Form

Initial  
Form

Non-Connector  
It doesn't connect from left.

3

تَاب

/tâb/

/swing/tâb



بَابِر

/babr/

/tiger/babr



بَابَا

/bâbâ/

/dad /bâbâ



ب

/Be /b

as in boy

Connector  
It connects from both sides.

4

ب

Final

ب

Medial

ب

Initial

توپ

/tup/

ball



تُپُل

/topol/

chubby



پَا

/pâ/

foot



پ

/Pe /p

as in parrot

Connector  
It connects from both sides.

5

پ

Final

پ

Medial

پ

Initial

توت

/tut/

berry



پَتُو

/patu/

blanket



تَب

/tab/

fever



ت

/Te /t

as in toy

Connector  
It connects from both sides.

6

ت

Final

ت

Medial

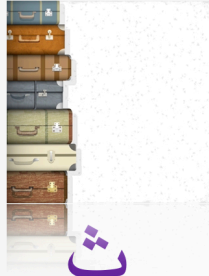
ت

Initial

اَثَات

/asâs/

luggage/furniture



ث

Final

مُثَلَّتْ

/mosalas/

triangle



ث

Medial

ثِرْوَت

/servat/

wealth



ث

Initial

ث

/Se /s

as in sun

Connector  
It connects from both sides.

7

خ

Khe /kh/  
as in Bakh

ح

He /h/  
as in hammer

چ

Che /ch/  
as in chair

ج

Jim /j/  
as in jet

8

تاج

/tâj/

crown



ج

Final

پَنَجَرَه

/panjare/

window



ج

Medial

جا

/jâ/

place



ج

Initial

ج

/Jim /j

as in jet

Connector  
It connects from both sides.

9

گچ

/gach/

chalk

بچہ

/bachche/

child

چپ

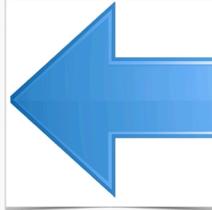
/chap/

left

چ

/Che /ch

as in chair



Connector  
It connects from both sides.

10

چ

Final

چ

Medial

چ

Initial

روح

/ruh/

ghost

راحت

/râhat/

comfortable

حَرَج

/harâj/

sale

ح

/He /h

as in hammer



Connector  
It connects from both sides.

11

ح

Final

ح

Medial

ح

Initial

كاخ

/kâkh/

palace

دُخْتَر

/dokhtar/

girl

خَرَاب

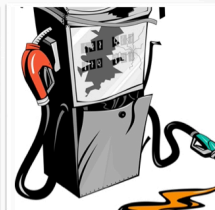
/kharâb/

broken

خ

/Khe /kh

as in Bakh



Connector  
It connects from both sides.

12

خ

Final

خ

Medial

خ

Initial

ذ ز ژ

Zhe /zh/  
as in beige

Ze /z/  
as in zoo

Re /r/  
as in red

Zâl /z/  
as in zoo

Dâl /d/  
as in doll

13

بَاد

/bâd/

wind



بِرَادِر

/barâdar/

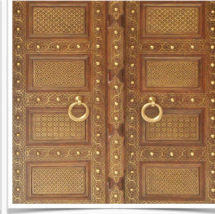
brother



دَر

/dar/

door



د

/Dâl /d

as in doll

Non-Connector  
It doesn't connect from left.

14

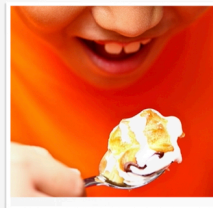
د

One Form

لَذِيذ

/laziz/

delicious



غَدَا

/qazâ/

food



زُرَّت

/zorrat/

corn



ز

/Zâl /z

as in zoo

Non-Connector  
It doesn't connect from left.

15

ز

One Form

أَبْر

/abr/

cloud



بَارَان

/bârân/

rain



رُب

/rob/

paste



ر

/Re /r

as in red

Non-Connector  
It doesn't connect from left.

16

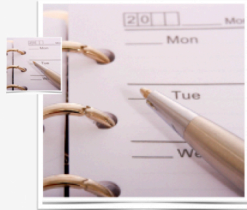
ر

One Form

رُوز

/rooz/

day



بَازَار

/bâzâr/

bazar



زَرْد

/zard/

yellow



ز

/Ze /z

as in zero

Non-Connector  
It doesn't connect from left.

17

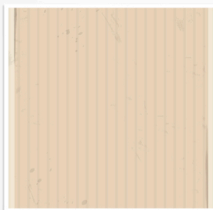
ز

One Form

بِرْ

/bezh/

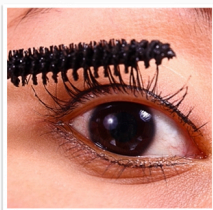
Beige



مُرَّة

/mozhe/

eyelash



رَّة

/zhele/

jelly



ر

/Zhe /zh

as in beige

Non-Connector  
It doesn't connect from left.

18

ر

One Form

# س ش ص ض ظ

Zâ /z/  
as in zoo

Tâ /t/  
as in toy

Zât /z/  
as in zoo

Sât /s/  
as in sun

Shin /sh/  
as in shoe

Sin /s/  
as in sun

19

سَبَزِ دُوسْتِ دَرَسِ

/dars/

lesson

/dust/

friend

/sabz/

green



س

/Sin /s

as in sun

Connector

It connects from both sides.

20

س

Final

س

Medial

س

Initial

دُوشِ

/dush/

shower

زِشْتِ

/zesht/

ugly

شَبِ

/shab/

night

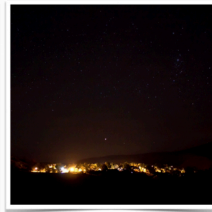
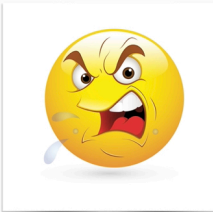
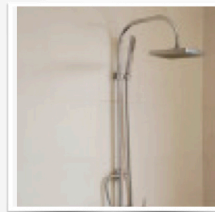
ش

/Shin /sh

as in shoe

Connector

It connects from both sides.



ش

Final

ش

Medial

ش

Initial

21

# رَقصْ پانصد صُبْحْ

/raqs/

dance

/pânsad/

five hundred

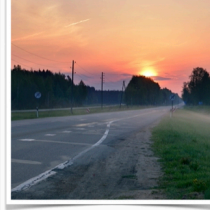
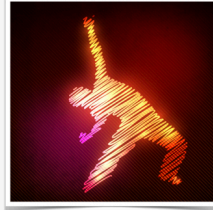
/sobh/

morning

# ص

/Sât /s

as in sun



Connector  
It connects from both sides.

22

# ص

Final

# صد

Medial

# ص

Initial

# حُوضْ فِصَا ضَرْبْ

/howz/

pond

/fazâ/

space

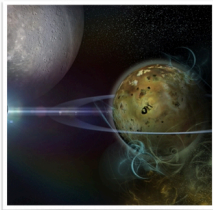
/zarb/

multiplication

# ض

/Zât /z

as in zoo



Connector  
It connects from both sides.

23

# ض

Final

# ضد

Medial

# ضد

Initial

# خَطْ طوطى طلا

/khat/

line

/tuti/

parrot

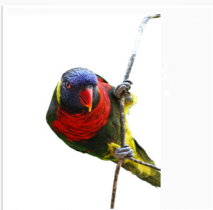
/talâ/

gold

# ط

/Tâ /t

as in toy



Connector  
It connects from both sides.

24

# ط

One Form



خُداحافِظ

/khodâhâfez/

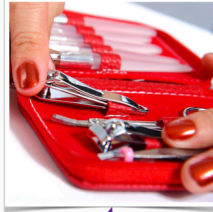
goodbye



مُنَظَّم

/monazzam/

organized



ظُهُر

/zohr/

noon



ظ

/Zâ /z

as in zoo

Connector

It connects from both sides.

ظ

25

One Form

ع غ ف ق

Qâf /q/  
as in merci  
(French)

Fe /f/  
as in flower

/Qeyn/q/  
as in merci  
(French)

/‘ / ‘Ain  
as in button  
/‘bât(ə)n/

26

نوع

/‘ no/

type



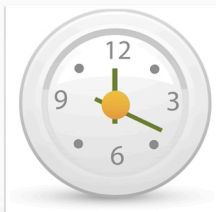
ع

Alone  
After a Non-Connector

رُبْع

/‘ rob/

quarter



ع

Final

جُمُعَة

/jom‘e/

friday



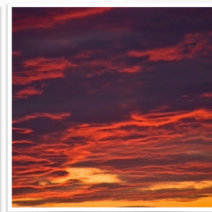
ع

Medial

عَصْر

/asr‘ /

evening



ع

Initial  
or After a Non-Connector

ع

/‘ / ‘Ain

as in button  
/‘bât(ə)n/

Connector

It connects from both sides.

27

بَاغ

/bâgh/

garden



تِيغ

/tigh/

razor



بَغْل

/baghal/

hug/next to



غَاذَا

/ghazâ /

food



غ

/Ghain /gh  
as in merci  
(French)

Connector  
It connects from both sides.

غ

28

Alone  
After a Non-Connector

غ

Final

غ

Medial

غ

Initial  
or After a Non-Connector

كِيْف

/kif/

bag



سِيْفِيْد

/sefid/

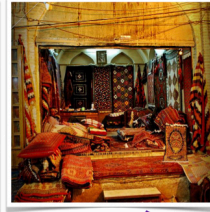
white



فَرَش

/farsh /

rug



ف

/Fe /f

as in flower

Connector  
It connects from both sides.

ف

Final

ف

Medial

ف

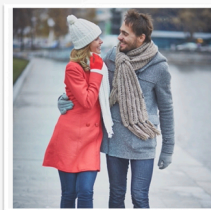
Initial

29

عَاشِق

/âshegh/

in love



چَقْدَر

/cheqadr/

how much



قِرْمِز

/qermez /

red



ق

/Qâf /q  
as in merci  
(French)

Connector  
It connects from both sides.

ق

Final

ق

Medial

ق

Initial

30

م ل گ ک

Mim /m/  
as in map

Lâm //  
as in lamp

Gâf /g/  
as in girl

Kâf /k/  
as in kite

31

کِیک

/Kayk/

cake



ک

Final

شِیکر

/shekar/

sugar



ک

Medial

کتاب

/ketâb /

book



ک

Initial

ک

/Kâf /k/

as in kite

Connector

It connects from both sides.

32

بُزرگ

/bozorg/

big



گ

Final

انگور

/angur/

grape



گ

Medial

گل

/gol /

flower



گ

Initial

گ

/Gâf /g/

as in girl

Connector

It connects from both sides.

33

گل

/gol/

flower



Final

فیلم

/film/

movie



Medial

لاله

/lâle /

tulip



Initial

ل

/Lâm /

as in lamp

Connector

It connects from both sides.

34

إِسْم

/esm/

name



Final

شُمَا

/shomâ/

you



Medial

مَادَر

/mâdar /

mother



Initial

م

/Mim /m

as in map

Connector

It connects from both sides.

35

ی

Ye /y/

as in yo yo

ه

He /h/

as in hammer

و

Vâv /v/

as in van

ن

Nun /n/

as in net

36

ماشين

/mâshin/

car



تُند

/tond/

spicy



نان

/nân /

bread



ن

/Nun /n

as in net

Connector

It connects from both sides.

37

ن

Final

ذ

Medial

ذ

Initial

ناو

/nâv/

ship(war)



کشور

/keshvar/

country



ورزش

/varzesh /

sport



و

/Nâv /v

as in van

Non-Connector

It doesn't connect from left.

38

و

One Form

ماه

/mâh/

moon



بهار

/bahâr/

Spring



هوا

/havâ /

weather



ه

/He /h

as in hammer

Connector

It connects from both sides.

39

ه

Final

ه

Medial

ه

Initial

چای

/chây/

tea



سیاه

/siyâh/

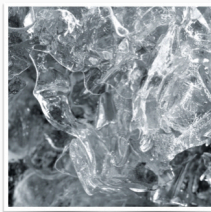
black



یخ

/yakh /

ice



ی

/Ye /y

as in yo yo

Connector

It connects from both sides.

40

ی

Final

ی

Medial

ی

Initial

و

/O/ o

Short Vowel

ه

/E/ e

Short Vowel

ا

/A/ a

Short Vowel

ا

41

Short Vowels

نه

/na/

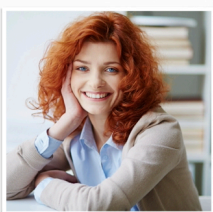
no



زن

/zan/

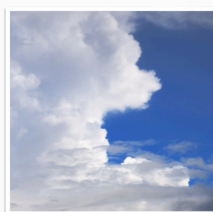
woman



ابر

/abr /

cloud



ا

/A/ a

Short Vowel  
Non- Connector

It doesn't connect from left.

42

ه

Final

ه

Medial

ا

Initial

قَهْوَه

/ghahve/  
coffee



ه

خانَه

/khâne/  
house



ه

پَدَر

/pedar/  
father



ـ

اِسْم

/esm/  
name



ـ

اِ

/E/e

Short Vowel  
Non- Connector

It doesn't connect from left.

43

Alone  
After a Non-Connector

Final

Medial

Initial  
or After a Non-Connector

دو

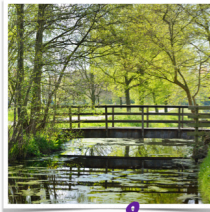
/do/  
two



و

پُل

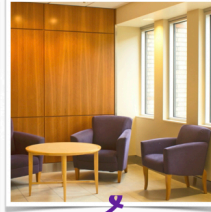
/pol/  
bridge



ـ

اُ

/otâq/  
room



ـ

اِ

/O/o

Short Vowel  
Non- Connector

It doesn't connect from left.

44

Final

Medial

Initial

اِی

/i/  
Long Vowel

و

/u/  
Long Vowel

اِآ

/â/  
Long Vowel

اِ

Long Vowels

45

پا

/pâ/

foot



ا

Final  
Form

تاب

/tâb/

swing



ا

Medial  
Form

آب

/âb/

water



آ

Initial  
Form

آ

/Alef /â

Long Vowel  
Non- Connector

It doesn't connect from left.

46

مو

/mu/

hair



روز

/ruz/

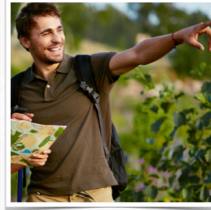
day



او

/u /

he/she



و

/U/u

Long Vowel  
Non- Connector

It doesn't connect from left.

47

و

Final

و

Medial

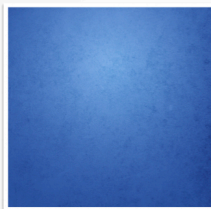
او

Initial

آبی

/âbi/

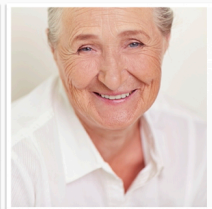
blue



پیر

/pir/

old



این

/in /

this



ی

/i/

Long Vowel  
Non- Connector

It doesn't connect from left.

48

ی

Final

ی

Medial

ای

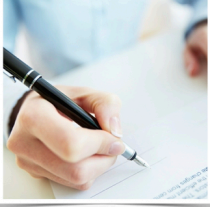

Initial



49

			س
		=	
ع			
Hamze /أ, /ع/		Tanvin /an/	Tashdid /doubles the consonant/
	Additional Signs		

50

إمضاء	حَتْمًا	بِجَه	Additional Signs
/ emzâ ' /	/hatman/	/bachche /	
signature	sure	Child	
			
Hamze /أ, /ع/	Tanvin /an/	Tashdid /doubles the consonant/	
ع	=	س	